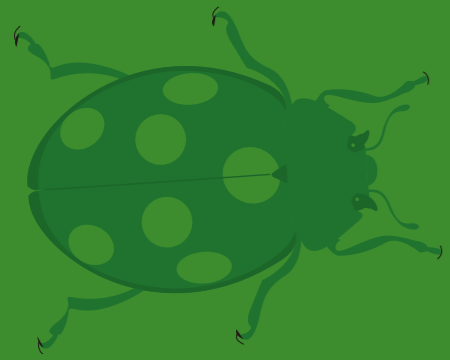


unitech®

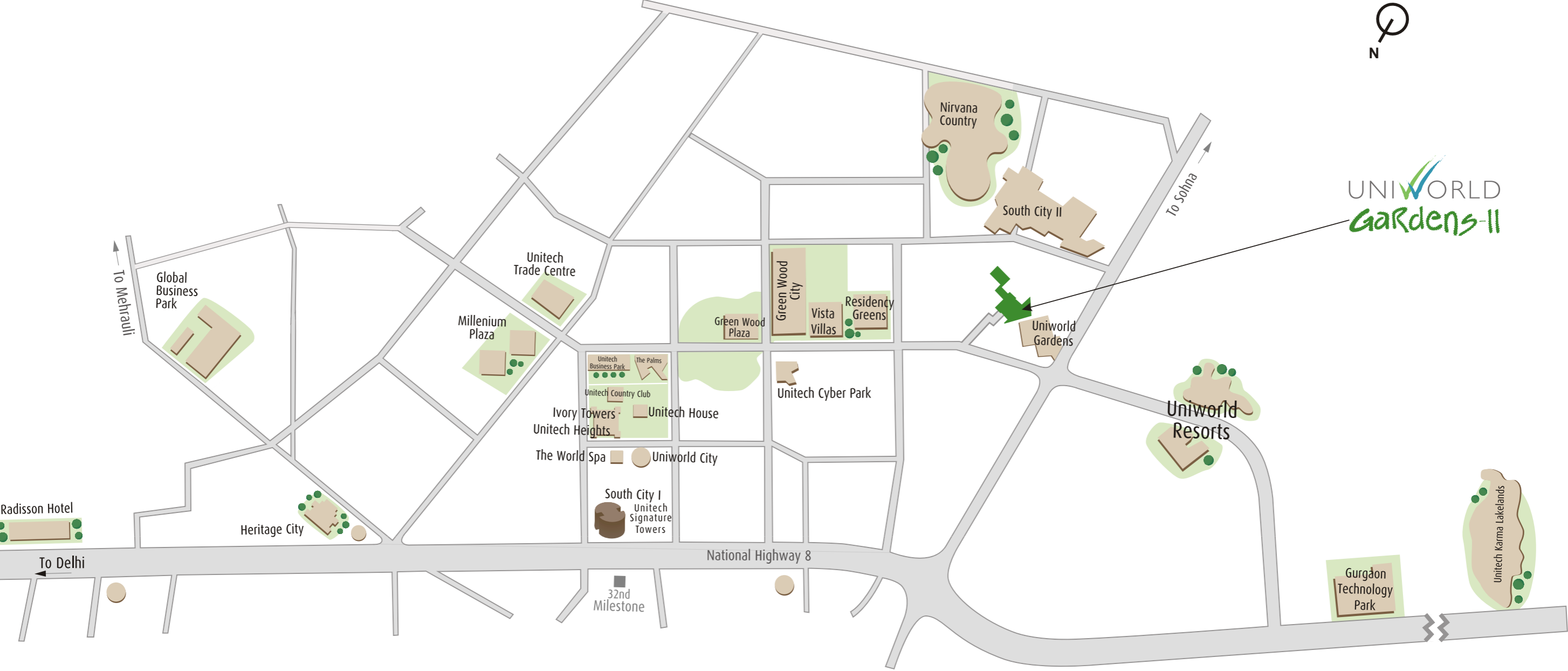


UNI WORLD
GARDENS-II

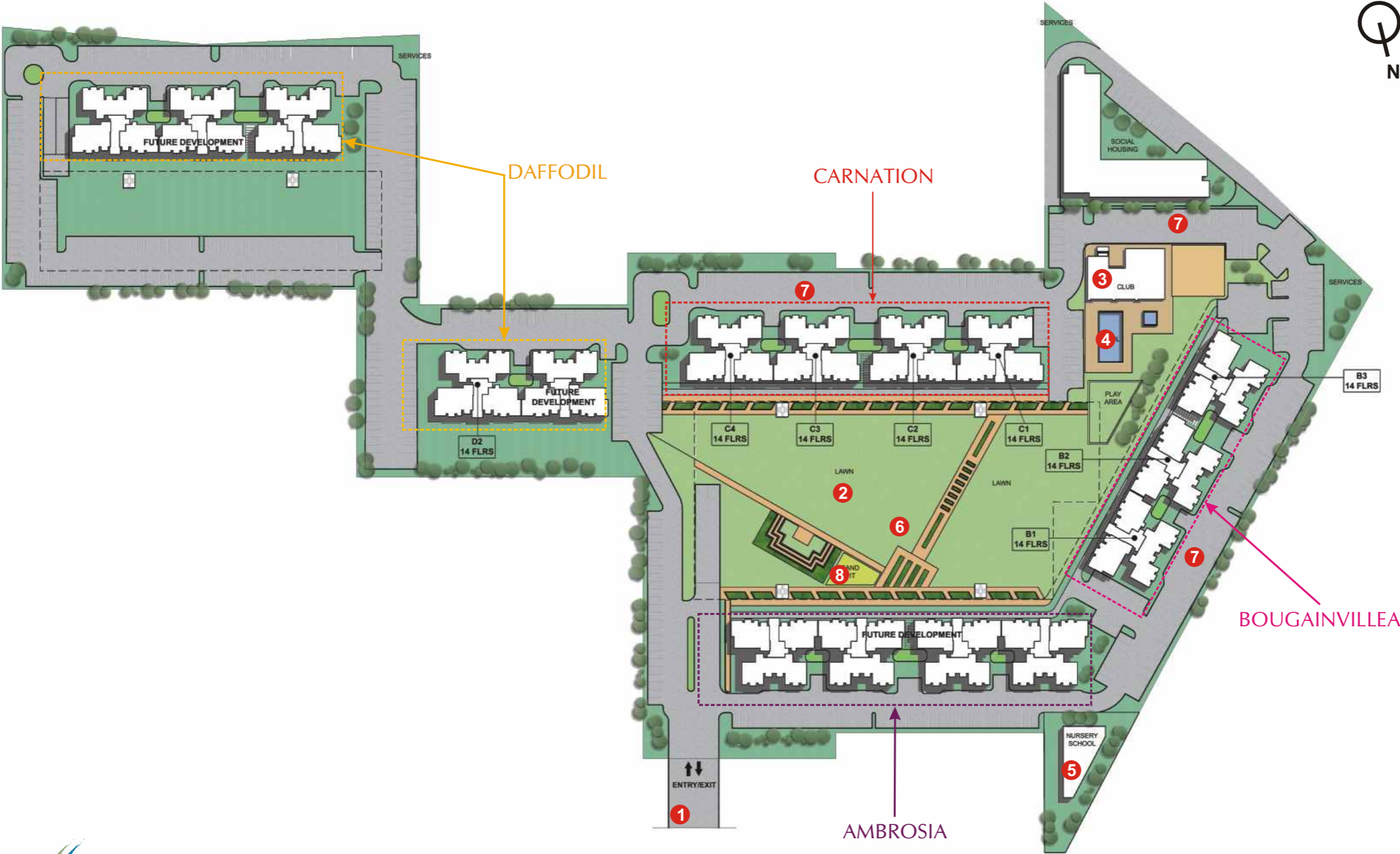
SECTOR-47, GURGAON



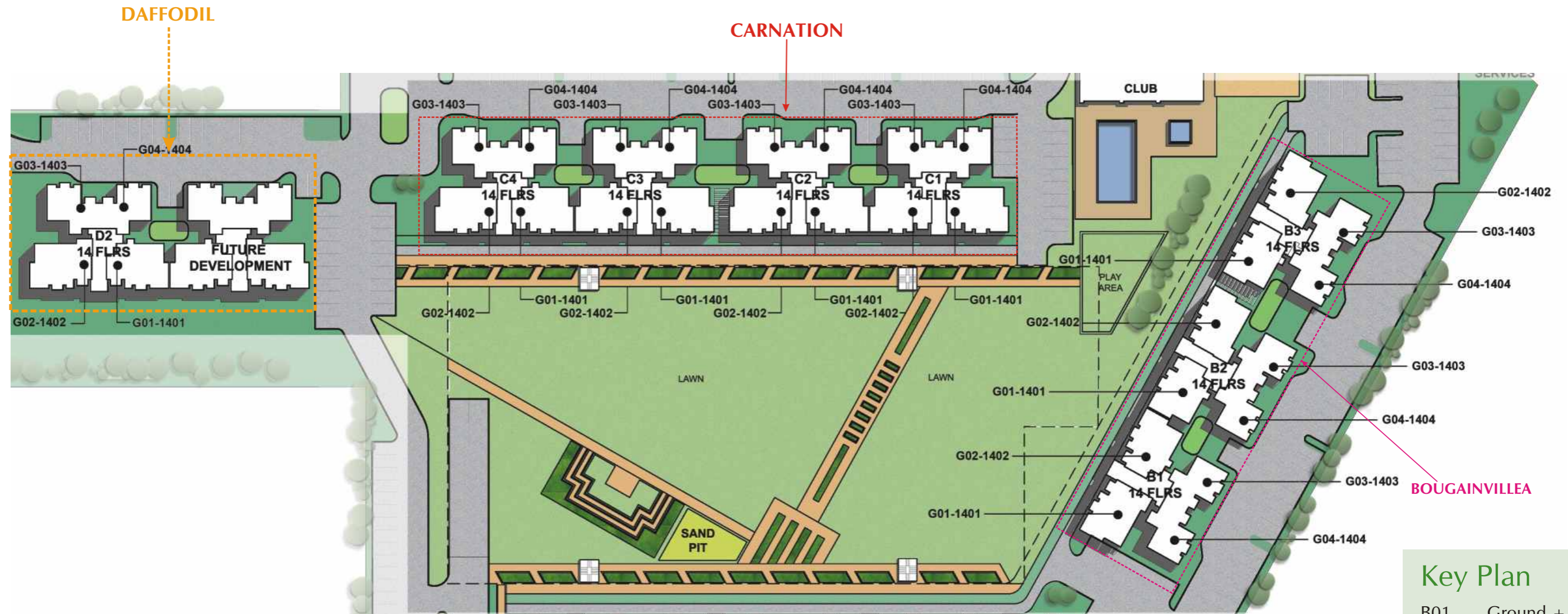
Location Map



Master Plan



Key Plan



Key Plan

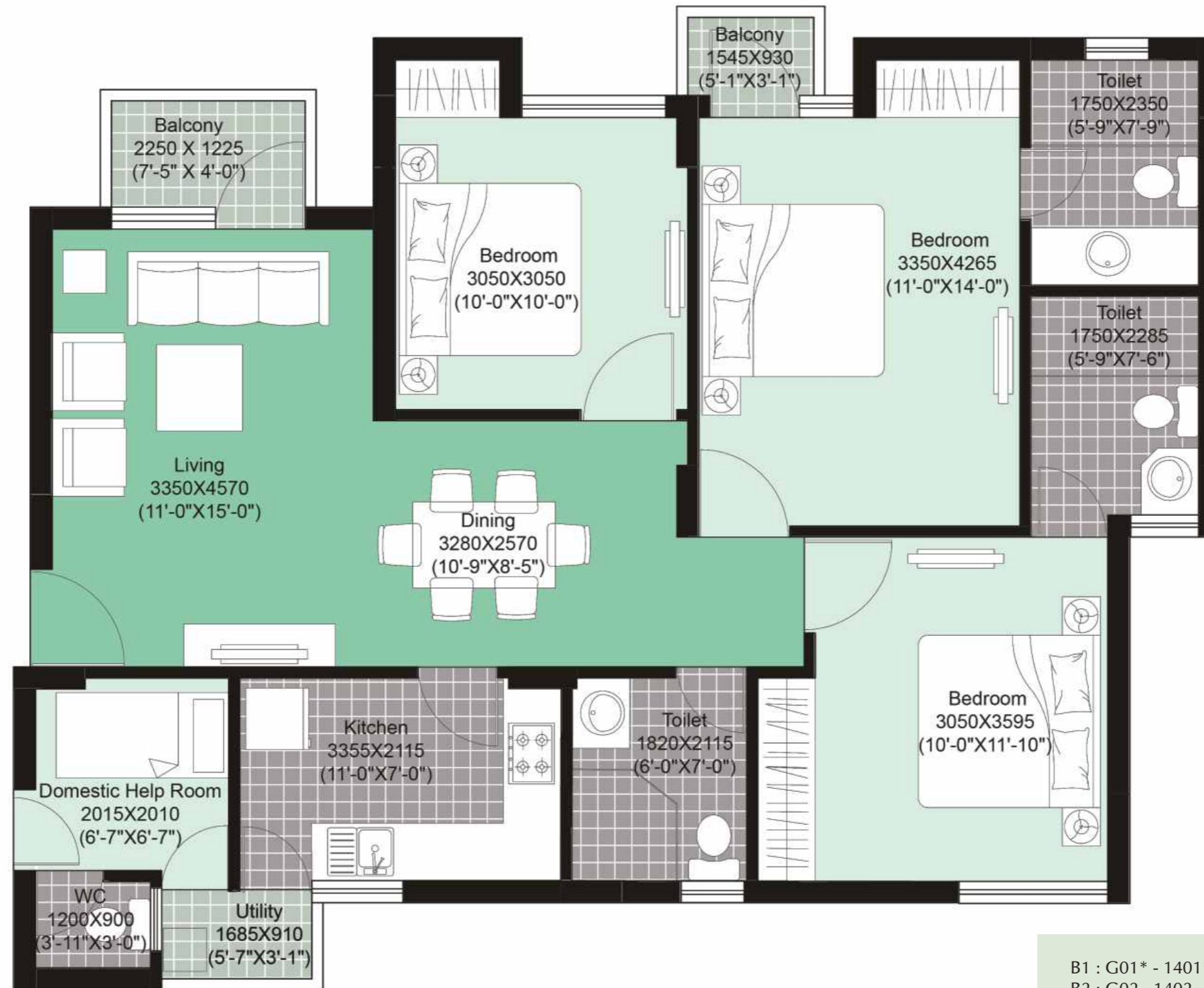
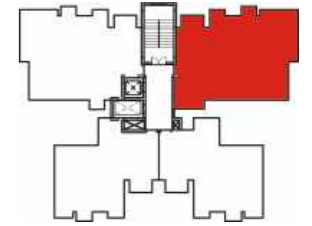
- B01 Ground + 13
- B02 Ground + 13
- B03 Ground + 13
- C01 Ground + 13
- C02 Ground + 13
- C03 Ground + 13
- C04 Ground + 13
- D02 Ground + 13



This is an artist's rendition & may undergo modifications.

Type - X1

3BR3TSQ (Sale Area: 1355 sq.ft.)

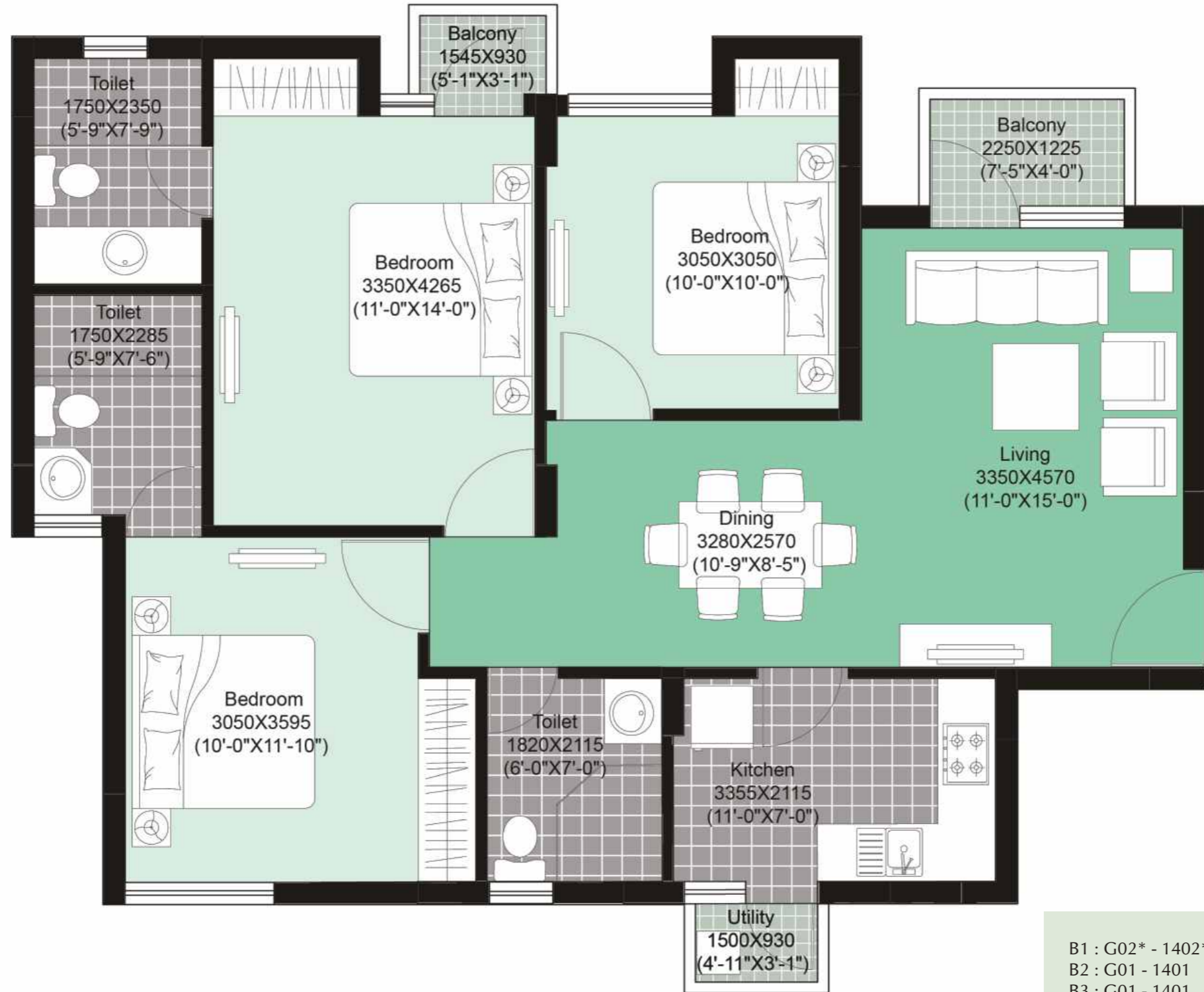
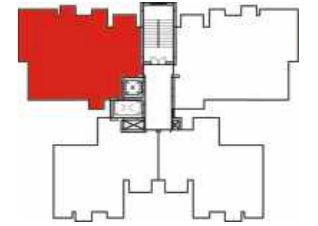


Please Note:
 1) * Indicates mirror image
 2) Floor No 13 does not exist

B1 : G01* - 1401*	C1 : G01* - 1401*	D2 : G02 - 1402
B2 : G02 - 1402	C2 : G02 - 1402	
B3 : G02 - 1402	C3 : G01* - 1401*	
	C4 : G02 - 1402	

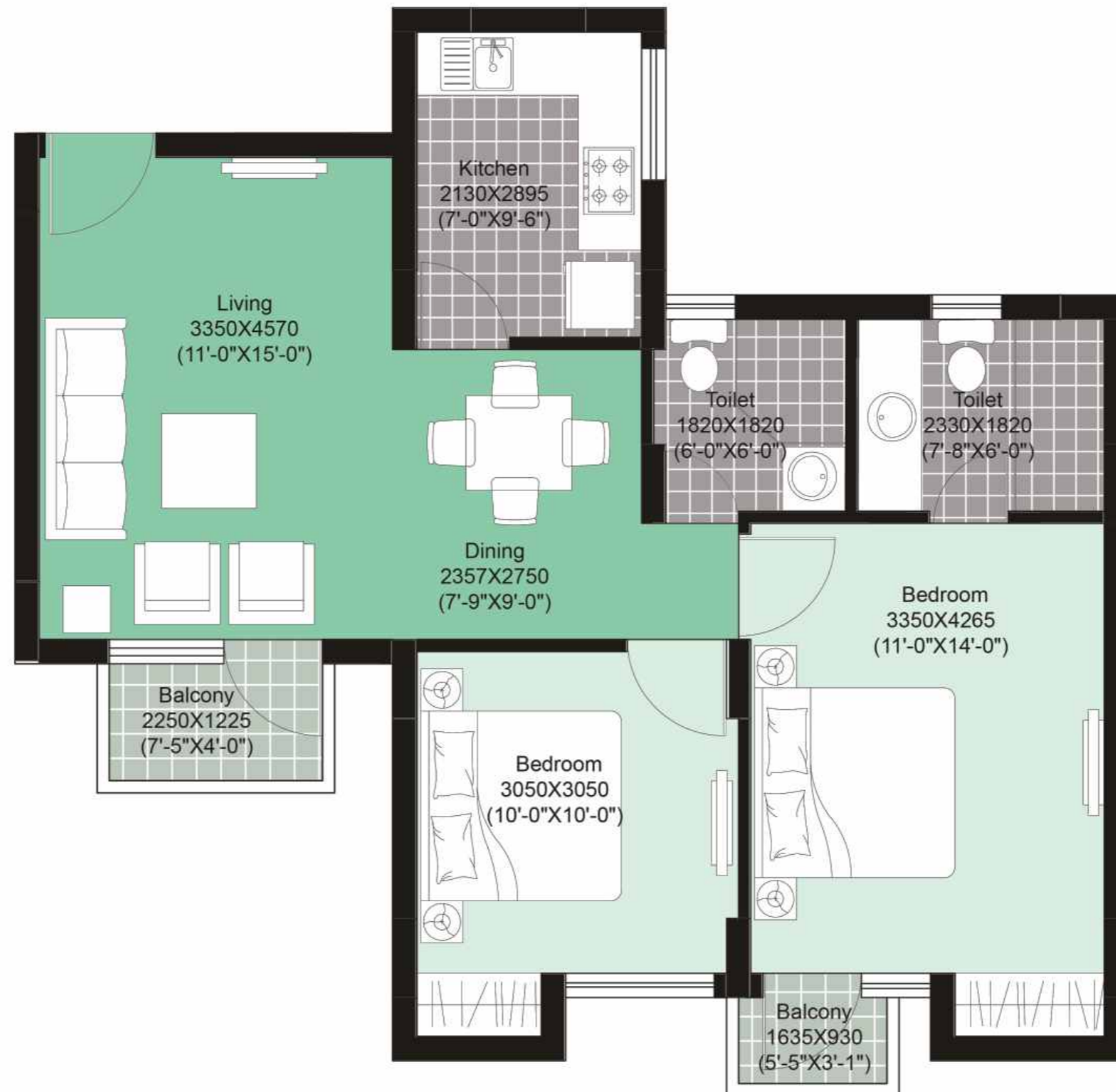
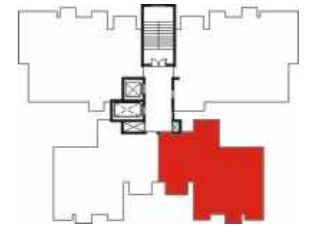
Type - Y1

3BR3T (Sale Area: 1275 sq.ft.)



Please Note:
 1) * Indicates mirror image
 2) Floor No 13 does not exist

B1 : G02* - 1402* C1 : G02* - 1402* D2 : G01 - 1401
 B2 : G01 - 1401 C2 : G01 - 1401
 B3 : G01 - 1401 C3 : G02* - 1402*
 C4 : G01 - 1401

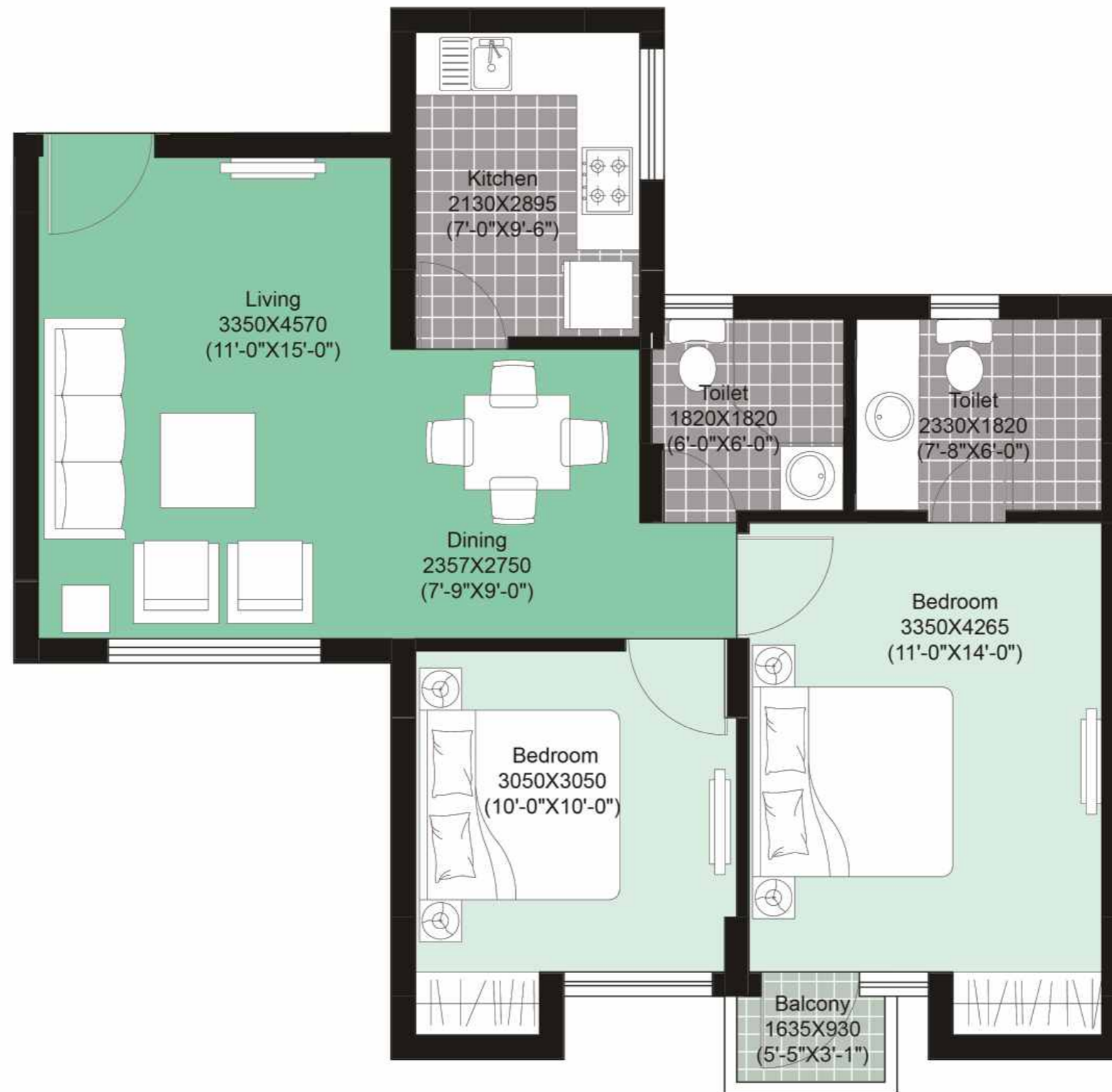
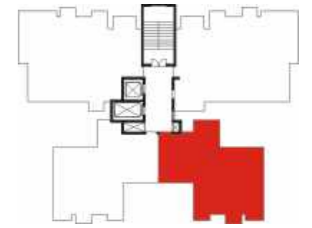


Please Note:
1) * Indicates mirror image
2) Floor No 13 does not exist

B1 : 203 - 1403; G04* - 1404*
B2 : G03 - 1403; 204* - 1404*
B3 : G03 - 1403; 204* - 1404*

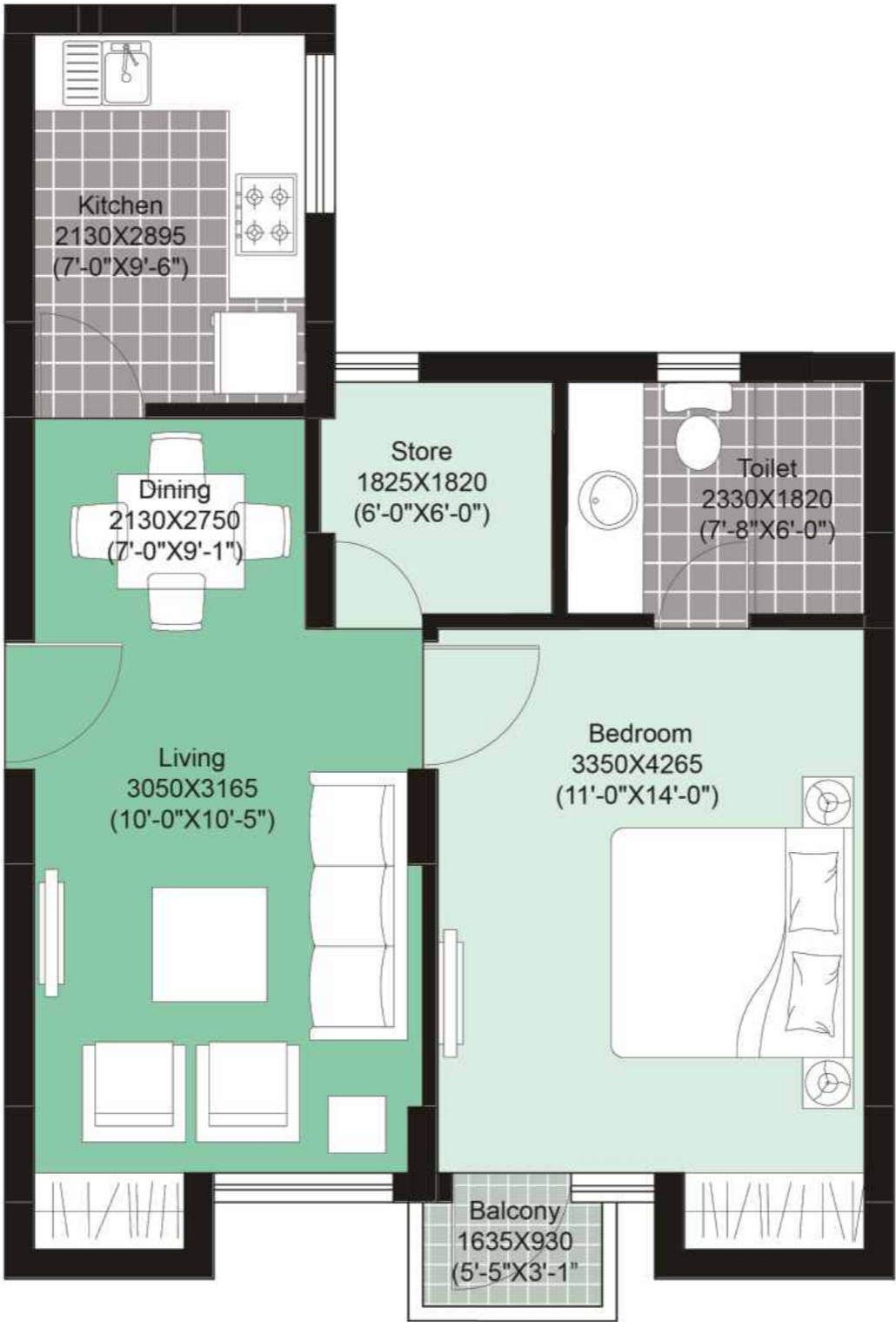
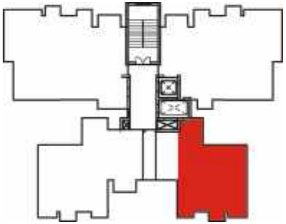
C1 : 203 - 1403; G04* - 1404*
C2 : G03 - 1403; 204* - 1404*
C3 : 203 - 1403; G04* - 1404*
C4 : G03 - 1403; 204* - 1404*

D2 : G03 - 1403; 204* - 1404*



Please Note:
1) * Indicates mirror image
2) Floor No 13 does not exist



B1 : 103	C1 : 103	D2 : 104*
B2 : 104*	C2 : 104*	
B3 : 104*	C3 : 103	
	C4 : 104*	



Please Note:
1) * Indicates mirror image
2) Floor No 13 does not exist

B1 : G03	C1 : G03	D2 : G04*
B2 : G04*	C2 : G04*	
B3 : G04*	C3 : G03	
	C4 : G04*	

Specifications - Universal

	Structure		Earthquake resistant RCC framed structure
	Flooring	Living /dining/bedrooms Balconies Common areas & staircase Lift lobby	Vitrified tile flooring Ceramic tiles Stone / marble Stone / vitrified tiles
	Wall	External Internal Lift lobby	Exterior paint Oil bound distemper Combination of stone & paint
	Lift		One passenger and one service lift in each tower
	Kitchen	Flooring Wall finishes Kitchen Counter	Ceramic tile flooring Ceramic tiles upto 600mm height above the counter Granite counter with stainless steel sink with drain board
	Doors	Internal External Main Door	Seasoned hardwood frames with moulded European style shutters Anodized / powder coated glazed aluminium doors Seasoned hardwood frames with moulded European style shutters
	Toilet fittings	Wall Flooring Fittings	Ceramic tiles upto 2100mm height Ceramic tile flooring EWC & wash basin in white colour, single lever CP fittings, granite counter, pipelines for geyser
	Windows		Anodized / powder coated glazed aluminium windows
	Electrical		Three phase supply with independent meter, copper wiring in concealed conduits
	Telephone		One telephone jack each in living room and master bedroom Intercom facility to each flat in living room
	Air Conditioning		Electrical point provision in all bedrooms / living
	Television		TV Point in living room and master bedroom
	Power back-up		24x7 power back-up

All floorplans, sitemap, specifications, amenities, facilities and perspective views are tentative in nature and are subject to revision

Specifications - International

	Structure		Earthquake resistant RCC framed structure
	Flooring	Living /dining/bedrooms Balconies Common areas & staircase Lift lobby	Laminated wooden flooring in bedrooms, rest vitrified flooring Ceramic tiles Stone / marble Stone / vitrified tiles
	Wall	External Internal Lift lobby	Exterior paint Plastic emulsion paint Combination of stone & paint
	Lift		One passenger and one service lift to each tower
	Kitchen	Flooring Wall finishes Kitchen Counter	Ceramic tile flooring Ceramic tiles upto 600mm height above the counter Granite counter with stainless steel sink with drain board
	Doors	Internal External Main Door	Seasoned hardwood frames with moulded European style shutters Anodized / powder coated glazed aluminium doors Seasoned hardwood frames with moulded European style shutters
	Toilet fittings	Wall Flooring Fittings	Ceramic tiles upto 2100mm height Ceramic tile flooring EWC & wash basin in white colour, single lever CP fittings, granite counter, pipelines for geyser
	Windows		Anodized / powder coated glazed aluminium windows
	Electrical		Three phase supply with independent meter, copper wiring in concealed conduits
	Telephone		One telephone jack each in living room and master bedroom Intercom facility to each flat in living room
	Air Conditioning		Electrical point provision in all bedrooms / living
	Television		TV Point in living room and master bedroom
	Power back-up		24x7 power back-up

All floorplans, sitemap, specifications, amenities, facilities and perspective views are tentative in nature and are subject to revision

Where your dreams will continue to blossom in all its wonder

Conceived to the highest standards, Uniworld Gardens - II is for those who seek to live out their dreams. The bustling Clubhouse offers an array of recreational activities. Take a plunge in the swimming pool or indulge in a power workout at the fully equipped gymnasium. Discover the tranquil surroundings as you take a walk along the landscaped greens & water features.

Uniworld Gardens -II truly redefines the essence of an invigorating residential living.



- Swimming Pool
- Indoor Badminton
- Table Tennis
- Snooker
- Gymnasium

- Party Hall
- Play Ground
- Manicured Gardens
- Water Features